



doucette
industries, inc

Item # CTD 36M2, Hydronic Series Liquid to Liquid Heat Exchangers

Boiler Water to Under-Floor Warming/Snow Melt
Single-Wall, Mechanically Cleanable, Tube-in-Tube



Specifications

Application	Non-potable
Heat Transfer	900,000 Btuh
Length	44 "
Width	54 "
Height	19 "
Hot Conn	2 5/8 "
Cold Conn	3 1/8 "
Weight	432 lbs

Benefits

- Compatible material for easy installation
- Clog-resistant and mechanically cleanable
- High-performance counterflow design
- Compact, rigid design is ready to install

Features

Available in all-copper construction, the Hydronic Series provides desirable material compatibility for fast and easy installation. The series is also available in 90-10 cupronickel and stainless steel for highly corrosive applications. The Hydronic Series is available in sizes from 50,000 Btu's through 1,000,000 Btu's and Doucette Industries will custom design models for specific applications.



20 Leigh Drive,
York, Pennsylvania 17406-8474



Website: www.doucetteindustries.com



Phone: 717-845-8746
Toll-free: 800-445-7511
Fax: 717-845-2864



Commercial/Industrial: AdamM@doucetteindustries.com
Residential/Light Commercial: AdamM@doucetteindustries.com



Other Applications

- Snow Melt
- Freeze Protection
- Domestic Hot Water
- Industrial Processes
- District Heating Facility
- Solar Energy
- Cogeneration

Rating Conditions and Specifications

Hotside: Boiler Water entering at 180°F, leaving at 160°F. Pressure Drop < 1 psig

Coldside: 50% Glycol entering at 50°F, leaving at 60°F. Pressure Drop < 2 psig

Design Pressure: 300psig both circuits



20 Leigh Drive,
York, Pennsylvania 17406-8474



Phone: 717-845-8746
Toll-free: 800-445-7511
Fax: 717-845-2864



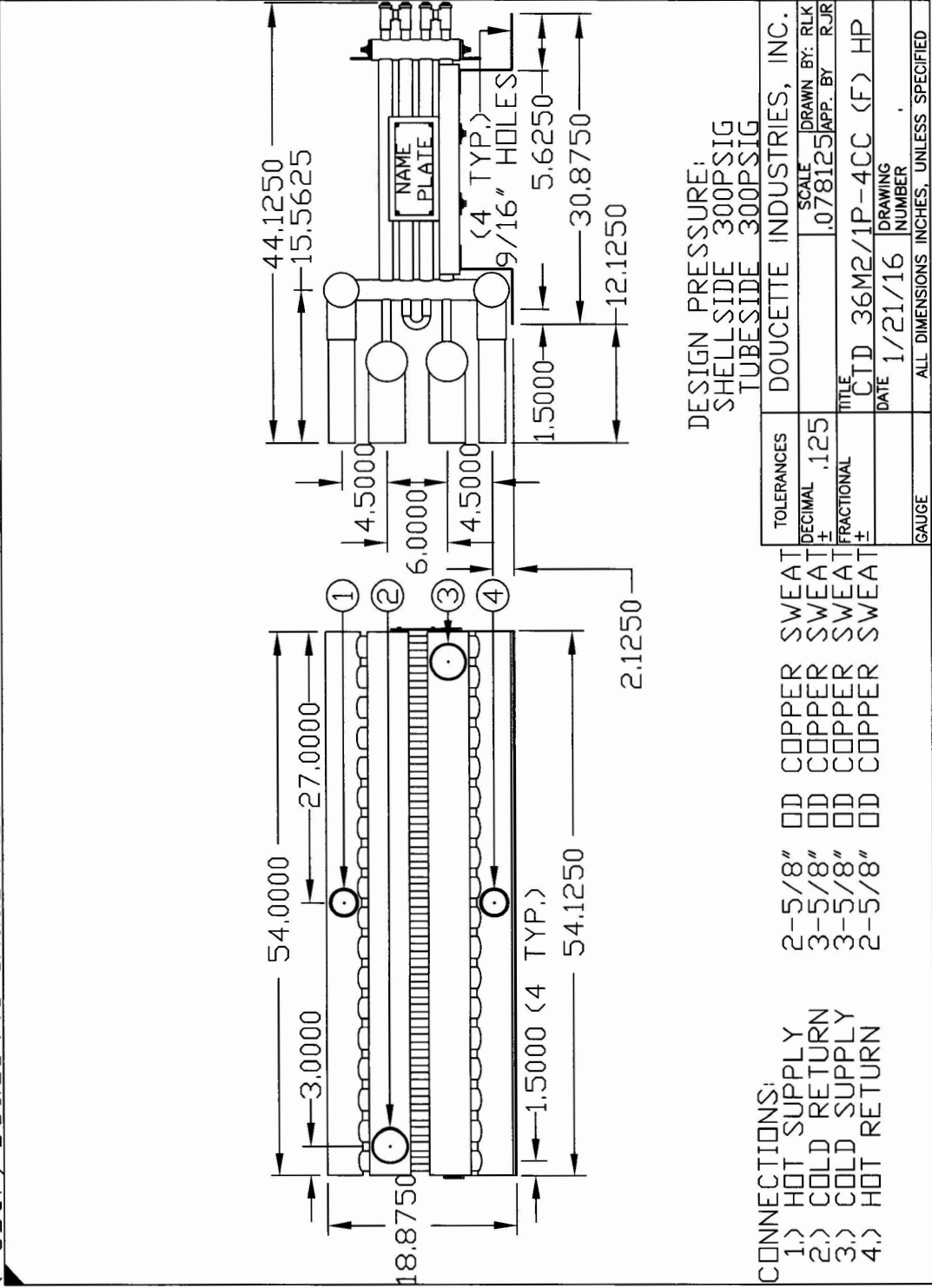
Website: www.doucetteindustries.com



Commercial/Industrial: AdamM@doucetteindustries.com
Residential/Light Commercial: AdamM@doucetteindustries.com



network User, Doucette Industries 1/21/2016 9:03 AM CTD-36M2-1P-4CC(F).dwg



DESIGN PRESSURE:
SHELLSIDE 300PSIG
TUBESIDE 300PSIG

TOLERANCES		DOUCETTE INDUSTRIES, INC.	
DECIMAL	.125	SCALE	DRAWN BY: RLK
FRACTIONAL		APPROX. BY	RJR
		TITLE	CTD 36M2/1P-4CC (F) HP
		DATE	1/21/16
		DRAWING NUMBER	
		ALL DIMENSIONS INCHES, UNLESS SPECIFIED	

CONNECTIONS:	SIZE	MATERIAL	TYPE
1.) HOT SUPPLY	2-5/8"	DD COPPER	SWEAT
2.) COLD RETURN	3-5/8"	DD COPPER	SWEAT
3.) COLD SUPPLY	3-5/8"	DD COPPER	SWEAT
4.) HOT RETURN	2-5/8"	DD COPPER	SWEAT



20 Leigh Drive,
York, Pennsylvania 17406-8474



Phone: 717-845-8746
Toll-free: 800-445-7511
Fax: 717-845-2864



Website: www.doucetteindustries.com



Commercial/Industrial: AdamM@doucetteindustries.com
Residential/Light Commercial: AdamM@doucetteindustries.com