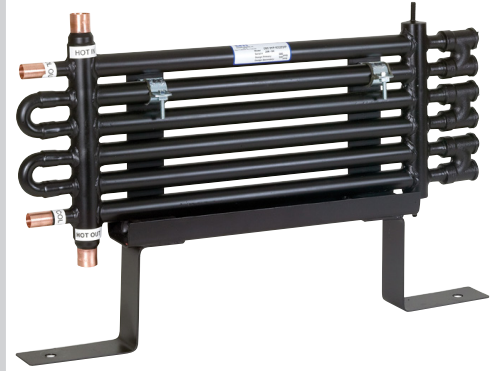


## Item # CTD 4M2, Hydronic Series Liquid to Liquid Heat Exchangers

Boiler Water to Under-Floor Warming/Snow Melt  
Single-Wall, Mechanically Cleanable, Tube-in-Tube



**Call dii**

### Specifications

|               |              |
|---------------|--------------|
| Application   | Non-potable  |
| Heat Transfer | 100,000 Btuh |
| Length        | 40 "         |
| Width         | 6 "          |
| Height        | 19 "         |
| Hot Conn      | 1 1/8 "      |
| Cold Conn     | 1 3/8 "      |
| Weight        | 48 lbs       |

### Benefits

- Compatible material for easy installation
- Clog-resistant and mechanically cleanable
- High-performance counterflow design
- Compact, rigid design is ready to install

### Features

Available in all-copper construction, the Hydronic Series provides desirable material compatibility for fast and easy installation. The series is also available in 90-10 cupronickel and stainless steel for highly corrosive applications. The Hydronic Series is available in sizes from 50,000 Btu's through 1,000,000 Btu's and Doucette Industries will custom design models for specific applications.



20 Leigh Drive,  
York, Pennsylvania 17406-8474



Website: [www.doucetteindustries.com](http://www.doucetteindustries.com)



Phone: 717-845-8746  
Toll-free: 800-445-7511  
Fax: 717-845-2864



Commercial/Industrial: [AdamM@doucetteindustries.com](mailto:AdamM@doucetteindustries.com)  
Residential/Light Commercial: [AdamM@doucetteindustries.com](mailto:AdamM@doucetteindustries.com)



## Other Applications

- Snow Melt
- Freeze Protection
- Domestic Hot Water
- Industrial Processes
- District Heating Facility
- Solar Energy
- Cogeneration

---

## Rating Conditions and Specifications

Hotside: Boiler Water entering at 180°F, leaving at 160°F. Pressure Drop < 1 psig

Coldside: 50% Glycol entering at 50°F, leaving at 60°F. Pressure Drop < 2 psig

Design Pressure: 300psig both circuits



20 Leigh Drive,  
York, Pennsylvania 17406-8474



Phone: 717-845-8746  
Toll-free: 800-445-7511  
Fax: 717-845-2864



Website: [www.doucetteindustries.com](http://www.doucetteindustries.com)

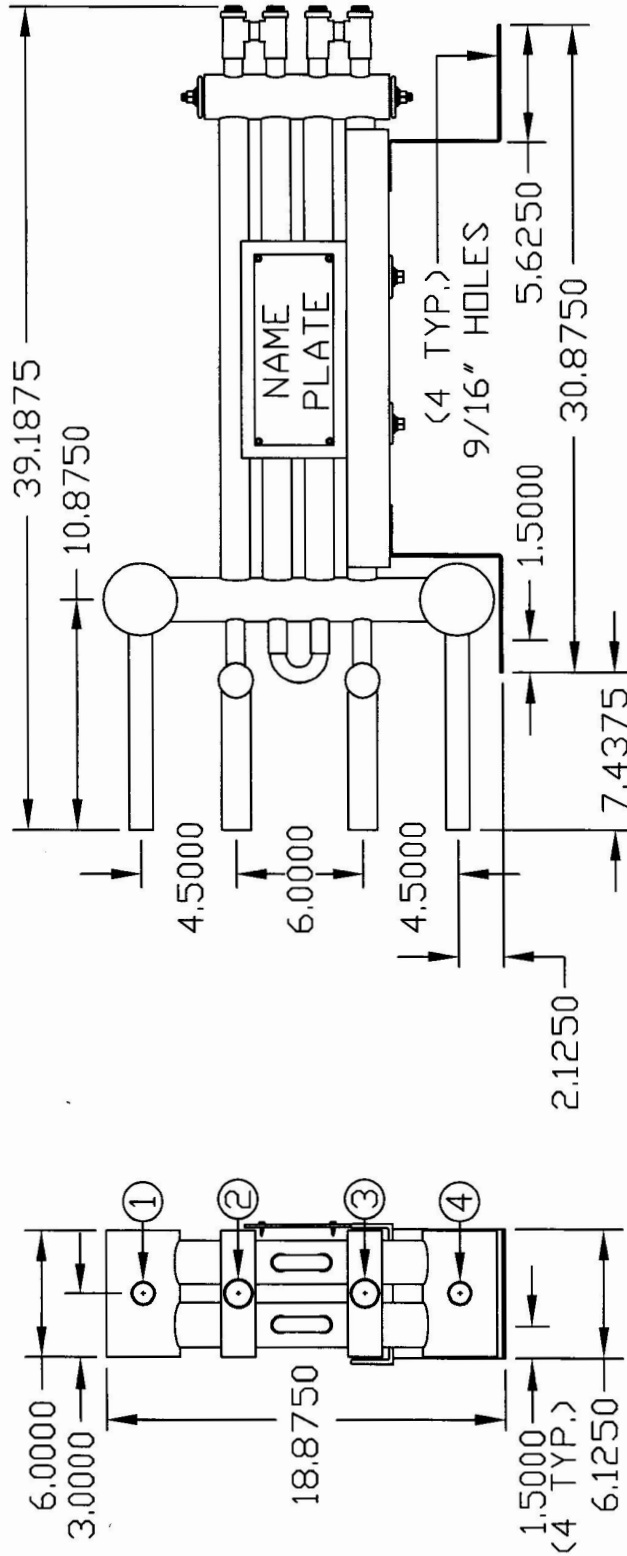


Commercial/Industrial: [AdamM@doucetteindustries.com](mailto:AdamM@doucetteindustries.com)  
Residential/Light Commercial: [AdamM@doucetteindustries.com](mailto:AdamM@doucetteindustries.com)



**doucette**  
industries, inc

Network User, Doucette Industries 12/21/2015 9:52 AM C63001.dwg



DESIGN PRESSURE:  
SHELLSIDE 300PSIG  
TUBESIDE 300PSIG

|            |   |                    |
|------------|---|--------------------|
| TOLERANCES | DOUCETTE INDUSTRIES, INC.               |                    |
| DECIMAL    | SCALE                                   | DRAWN BY: MLB      |
| $\pm$ .125 | .125                                    | APP. BY: RJR       |
| FRACTIONAL | TITLE                                   | CTD 4M2/1P-4CC (F) |
| $\pm$      | DATE                                    | 12/16/98           |
| GAUGE      | DRAWING NUMBER                          | C63001             |
|            | ALL DIMENSIONS INCHES, UNLESS SPECIFIED |                    |

|                 |        |    |        |       |
|-----------------|--------|----|--------|-------|
| CONNECTIONS:    | 1-1/8" | DD | COPPER | SWEAT |
| 1.) HOT SUPPLY  | 1-3/8" | DD | COPPER | SWEAT |
| 2.) COLD RETURN | 1-3/8" | DD | COPPER | SWEAT |
| 3.) COLD SUPPLY | 1-1/8" | DD | COPPER | SWEAT |
| 4.) HOT RETURN  |        |    |        |       |



20 Leigh Drive,  
York, Pennsylvania 17406-8474



Phone: 717-845-8746  
Toll-free: 800-445-7511  
Fax: 717-845-2864



Website: [www.doucetteindustries.com](http://www.doucetteindustries.com)



Commercial/Industrial: [AdamM@doucetteindustries.com](mailto:AdamM@doucetteindustries.com)  
Residential/Light Commercial: [AdamM@doucetteindustries.com](mailto:AdamM@doucetteindustries.com)